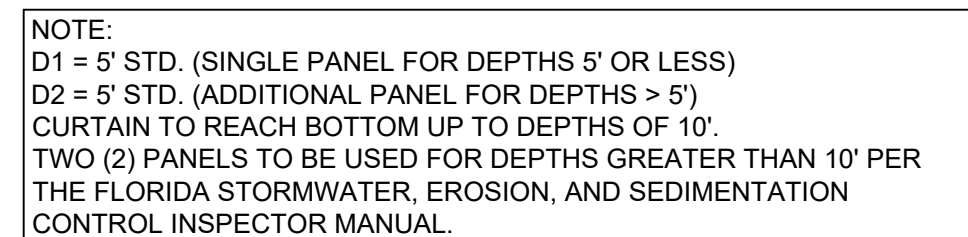


FLOATING TURBIDITY BARRIERS



FLOATING TURBIDITY BARRIERS TYP. SECTION



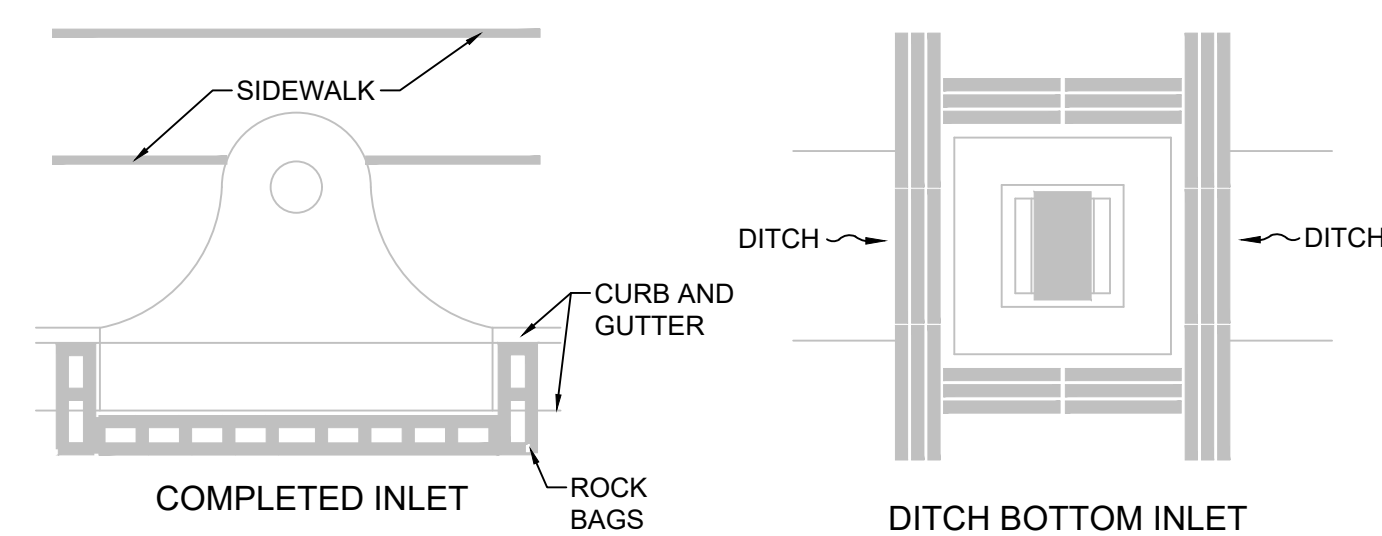
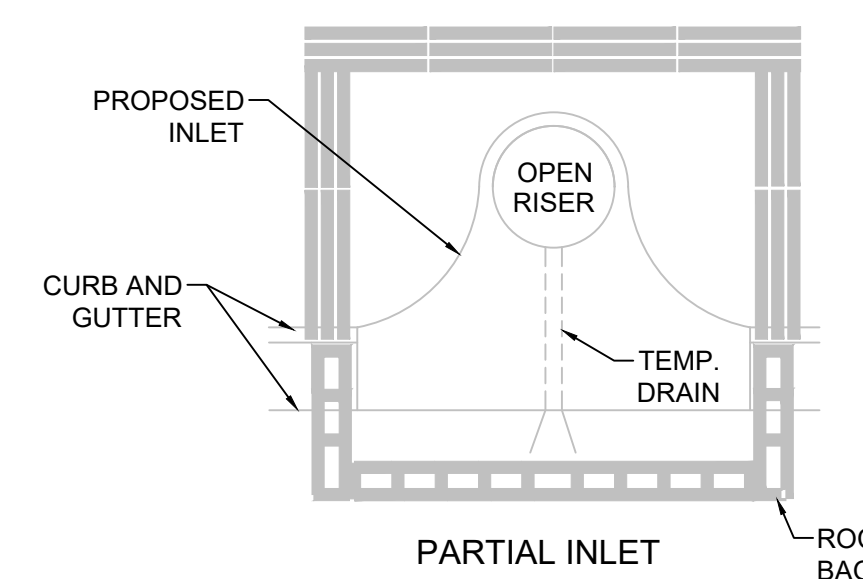
EROSION CONTROL GENERAL NOTES

1. SILT FENCE AND TURBIDITY BARRIERS MUST REMAIN IN PLACE AND BE MAINTAINED AT ALL LOCATIONS SHOWN IN THE DRAWING UNTIL CONSTRUCTION IS COMPLETED AND SOILS ARE STABILIZED AND VEGETATION HAS BEEN.
2. CONTRACTOR SHALL SUBMIT SCHEDULE FOR THE INSTALLATION, INSPECTION AND MAINTENANCE THE EROSION CONTROLS FEATURES AS SHOWN IN THE DRAWINGS OR AS DIRECTED BY THE DESIGN ENGINEER. THE SCHEDULE SHALL SPECIFICALLY INCLUDE THE SEASON OF THE YEAR, CLEARING, EARTH WORK OPERATIONS, AND WHEN THE EROSION CONTROL FEATURE WILL BE INSTALLED, INSPECTED, AND MAINTAINED. IT SHALL ALSO INCLUDE METHODS TO PREVENT POLLUTION OF STREAM, LAKES, TIDAL WATERS, CANALS, AND IMPOUNDMENTS. ESTABLISHED.

EROSION CONTROL DETAILS

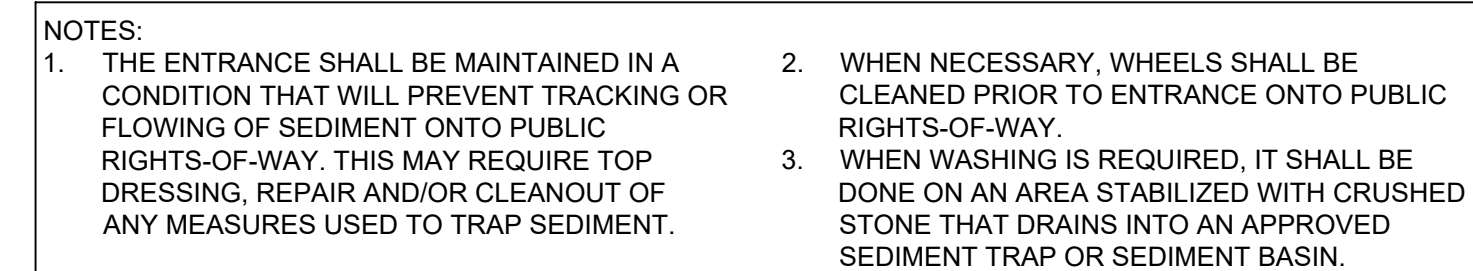
NOT TO SCALE

ATTACHING TWO SILT FENCES



- NOTE:**
1. ANCHOR BALES WITH 2 STAKES PER BALE.
 2. WHEN USED IN CONJUNCTION WITH A SILT FENCE, BALES SHALL BE PLACED ON THE UPSTREAM SIDE OF THE FENCE.

PROTECTION AROUND INLETS OR SIMILAR STRUCTURES



TEMPORARY GRAVEL CONSTRUCTION ENTRANCE

BID-CONTRACT:

THOMAS F. DONAHUE, P.E.
FLORIDA REG. NO. 60529
(FOR THE FIRM)

CLIENT

**FIRST
INDUSTRIAL**

PROJECT

**FIRST 95 DISTRIBUTION
CENTER- PHASE II
1000-1041 NW 12th Ter.
Pompano Beach, FL**

SHEET TITLE

EROSION CONTROL DETAILS

CG-501

PROJECT NUMBER 10607.14

PZ25-12000030

10/01/2025

Plotted by: dosuna On 8/27/2025 11:06 AM

Drawing name: Q:\10607.14 - First 95 Distribution Center - PH 2 - First Industrial\Engineering\Cadd\10607.14-CG-5XX.dwg

STATISTICS: DPEI IMINAPV